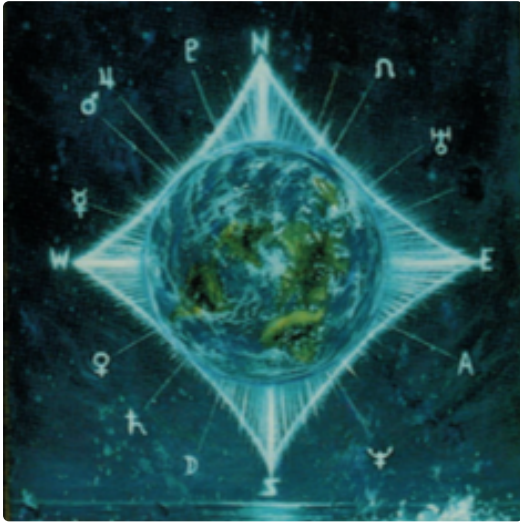


Planets in Locality - Introduction to Local Space Astrology

Extracts by Steve Cozzi

The Horizon System and the Local Space Chart



What exactly is the Local Space / Horizon System and how does it work? This is a list of how Local Space and locality astrology can help those using its methods:

It can put you in touch with your personal planetary patterns, acting as an aid to discovering your *own* personal myth. It depicts a journey through all your strengths and weaknesses. This journey is plotted in the heavens, but it can literally take you across the planet in search of those special places that can add meaning and vitality to your life.

It can help uncover how these planetary energies manifest in your daily life. It shows how to perceive and interact in a new "art of living." The improvements that follow can make your home life more comfortable and enjoyable. It can systematically describe the many influences in your community or natural

surroundings that may affect you for good or ill.

Basically it offers you the freedom of choice in determining not only how you want to live but where you should relocate or travel to. Locality astrology can tell you what influences are at work anywhere you may be on Earth. You'll find out how each direction you travel, or the location you live in, affects your psychological and physical health.

It can answer questions like: Where is the best place to add on to the home? Where is the proper place for the pets to stay or the musical instruments to be stored, etc. In which part of town will I find a suitable partner? Why do I instantly like people from some parts of the country and have an aversion to others from different locations? Where is the best location for my career in the U.S., New Zealand, or elsewhere?

ASTRO CLICK LOCAL SPACE - EXPLORE YOUR WORLD WITH ASTROLOGY



With the interactive [Local Space Astrology](#) feature at [astro.com](#) you can explore the world around you astrologically. You may check out the planetary patterns in your place of residence, your workplace or for planning a holiday trip. Locality astrology can tell you what influences are at work anywhere you may be on Earth. [Try it out, it's free!](#)

What is the Local Space / Horizon System?

Azimuth

Picture yourself in the middle of a large transparent dome located in a wide open field. You could be facing in any direction: north, south, east or west. At night all the stars and planets are there for you to observe. As you turn completely around in a circle, you will have covered 360 degrees on the horizon. These 360 degrees are called *azimuth*. This visible horizon around you is a local piece of the Earth's surface and a localized view of space: a "local space." The horizon that is seen in this local space perspective is *not* the same view as the standard zodiac which is the ecliptic, i.e. the path of the Sun. In any place you may be on the planet, you will have these 360 degrees of azimuth surrounding you. It is a circle on the Earth's surface acting as a compass to guide us in any of the 16 directions.

Altitude

Throughout the day the planets and stars will continually change position due to the Earth's rotation. Different stellar bodies will be seen at different heights above the horizon. These heights are expressed as *altitude*. When above the horizon, height is expressed as $+0^\circ$ to $+90^\circ$ of altitude, when below the horizon it is expressed as -0° to -90° altitude.

Local Space is very much a person-centered astrology, for the observer and the observed. We *are* the center, with the *zenith* directly above us and the *nadir* directly below. So, we have 360 degrees of azimuth around us, $+0^\circ$ to $+90^\circ$ of altitude to the zenith, and -0° to -90° of altitude to the nadir below.

Vertex and Anti-Vertex

A standard chart for your current location or birth location most likely has the *Vertex* (VT) position listed. The Vertex is due west and the opposite point, the *Antivertex*, is due east. The Tenth House cusp is always due south and the Fourth House cusp is due north, in the Northern Hemisphere. (As you can see in Fig. 2, this reverses the customary position of the houses).

The altitude of the planets cannot be given because this is *not* a true Local Space chart, but a standard chart, and therefore the planets are on the ecliptic. What you need is the planets on the horizon measured in azimuth.

A standard or Local Space chart must be for your present location; i.e., the date and time (true local time) stays the same but the Midheaven/10th, and Vertex, are (including Ascendant) determined by the latitude and longitude of your present location.

Horizon Chart

If you place yourself back inside your dome you see that the planets are at a certain altitude. By drawing a line straight down from each planet to the horizon you would find that it is in a certain compass direction. If you walked in that direction within or outside of the dome you would be walking on that *planetary line*.

This planetary line will be different in every place to which you travel or relocate, because it is calculated for a specific latitude and longitude. Your birth time and date cannot be changed. Time remains frozen but space/place *can* change. This is the primary truth underlying the whole field of locality astrology.

In other words, the aspects between the planets will always be constant but the cusps or angles - Ascendant, Midheaven (Medium Coeli or MC), Vertex, etc. - will vary from one location to the next. So even though the planetary aspects among themselves remain the same, the aspects to the angles are different in *every* location.

Favorable Locations

Although there are a number of favorable locations to move to, it is not likely that most people will do so. National, cultural and economic boundaries may cause you to stay within a familiar region. However, you can still choose the best possible location within limited geographical areas.

Relocating may not be the answer for everyone, but traveling is an option that can be undertaken by many. And even without traveling, Local Space Astrology still offers a great deal of information. There is the home and the community where you spend most of your life. That transparent dome referred to earlier could well be your home - a home with the planetary lines running through it and beyond it into the community and/or neighborhood.

The bottom line is that you are partly a product of your environment. So if you change the environment, you will effect the product, thus causing changes in health, thinking and inner life.

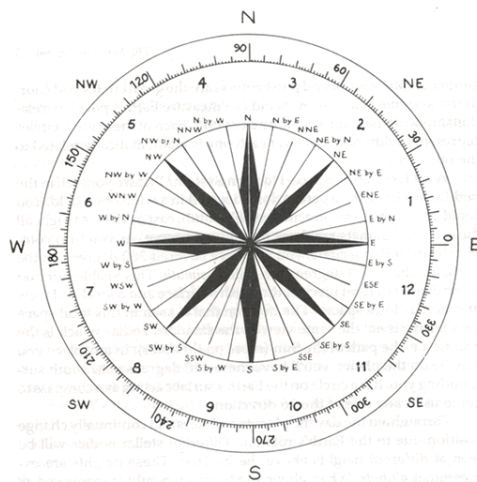


Fig. 2—The Horizon and the Houses
A Local Space or Azimuth chart reverses house positions and places planets on the horizon.

The Local Space Chart in the Home

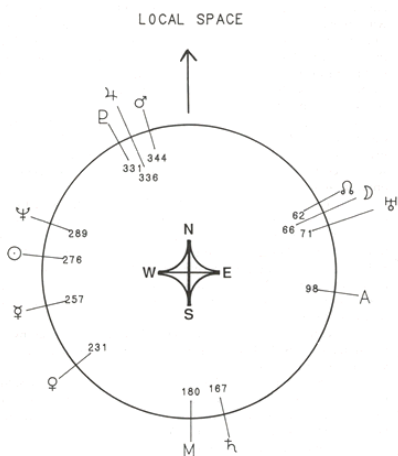


Fig. 8
On a Local Space chart, planetary positions are indicated in degrees of azimuth.

Most people spend over 85% of their lives in and around their home and workplace. Now you have the Local Space chart as the perfect tool to tune in the wide variety of conditions in your immediate environment.

Everything around you has a symbolic and literal meaning, and through the use of the Local Space chart you can begin to discover the vast interplay of the spiritual and material worlds.

The first step is to get a Local Space chart for your present location ([here](#)). The important thing to remember is that the planets are no longer in the 360 degrees of the Zodiac/Ecliptic System. In a Local Space chart they are viewed in 360 degrees of azimuth, measured in the circumference of the horizon. There are no signs in this system, and the houses are reversed.

Azimuth is simply a way of finding out the direction of the planets. The beginning point of 0 degrees azimuth is usually due north. If due north is 0° azimuth, then 90° clockwise will be due east, 90°

counterclockwise will be due west, and 180° is due south. (The international standard is due north = 0°, east = 90°, south = 180°, west = 270°.)

Astrodienst uses a more traditional definition of Azimuth, counting from the South, clockwise. south = 0°, west = 90°, north = 180°, east = 270°.)

Planetary Lines in the Home

Once you have your Local Space chart for your present locality, the next step is to get a floor plan of your home and/or office. Since this is not usually available, I suggest you make one. Draw it on an average 8 ½" by 11" piece of paper and add as much detail as you think necessary (the more the better). I suggest that you put in all rooms, furniture, windows. The more you include, the easier it will be to see where the planetary lines are going. The next step is to find out where due north is in your home. The simplest way to find out is to use a local map. If you want accuracy, you can find out due north with a compass.

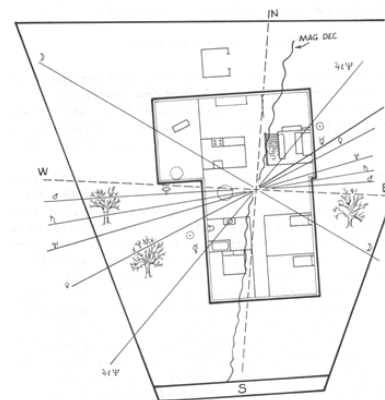


Fig. 9
Floor plan with planetary lines and compass points indicated.

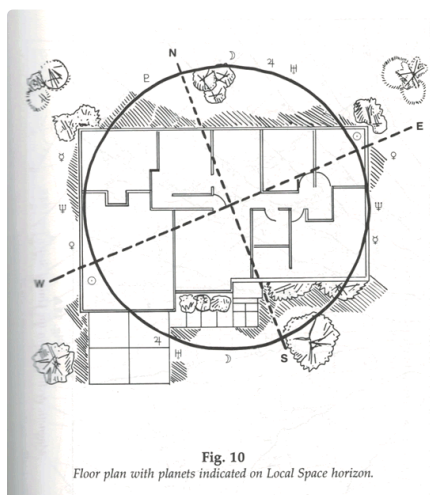
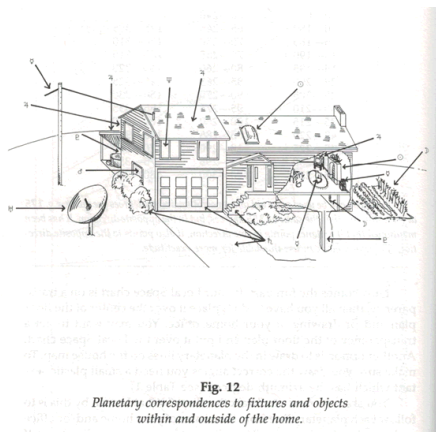


Fig. 10
Floor plan with planets indicated on Local Space horizon.

If your Local Space chart is on a transparency, then all you have to do is place it over the center of the floor plan and/or drawing of your home/office. You may want to get a transparency of the floor plan and put it over the Local Space chart. Another option is to draw the planetary lines on the house map. To make sure you draw the correct angles you need a small plastic sextant which has the azimuth degrees.

You are now ready to "walk the chart." You can follow each planetary line from the center of your home and/or office and see what they intersect. These lines of force go in two directions. If a planetary line runs a few degrees south of west, then it also runs a few degrees

north of east (see TABLE 1). In my current understanding of Local Space, I am assuming that both directions are equal in strength. It is entirely possible that the actual direction in which the planet lies has a stronger influence.



There are ten planetary lines plus the Nodes; some of the lines will be close together, others far apart (FIGURES 9 and 10). Each planet reacts differently because of its own particular qualities. The qualities of two or more planets will begin to blend at about five degrees of orb, using only the conjunction and opposition aspects. The closer they are to one another, the more blended their energies will become.

Table 1
Degrees of Azimuth Cross Comparison Chart

0—0	60—240	125—305
0—180	65—245	130—310
5—185	70—250	135—315
10—190	75—255	140—320
15—195	80—260	145—325
20—200	85—265	150—330
25—205	90—270	155—335
30—210	95—275	160—340
35—215	100—280	165—345
40—220	105—285	170—350
45—225	110—290	175—355
50—230	115—295	180—360
55—235	120—300	

This table can be used as an aid when various azimuth degrees are given, e.g. 175 degrees of azimuth is the same as 355 degrees, but in the opposite direction. It has been mentioned that if a planet points in one direction, it also points to the opposite direction. Therefore, you can use this table for more exactitude.

The objects and fixtures throughout your home or office also have a planetary signature. Each of them can be linked to a certain planet (FIGURE 12 and TABLE 3). What we have then is planetary lines of force radiating outward, into and through objects and fixtures in the home. Each planetary line points to a particular area. The planetary influences are most helpful when they intersect the objects and fixtures that are harmoniously associated with. ([Click on the respective planet in the local space map for an explanation.](#))

Planetary Intersections with Objects and Fixtures in and around the House

Moon objects: Adverse influence: *Saturn* line through *Moon* objects

- Main on and off water control
- Majority of potted plants
- Garden plot
- Washer
- Swimming pool
- Allergic substances
- Small boats

Sun objects: Adverse influence: *Saturn* line through *Sun* objects

- Skylight
- Child's room
- Wood stove, fireplace
- Warmest part of the house

Mercury objects: Adverse influence: *Mars* line through *Mercury* objects

- Telephone(s)
- Books
- Radio
- Dogs, cats and other small animals

Venus objects: Adverse influence: *Pluto* line through *Venus* objects

- Things of beauty
- Most used furniture (not including bed)
- Guest room
- Musical instruments
- Wood pile
- Women's clothes
- Middle levels

Mars objects: Adverse influence: *Saturn* or *Neptune* line through *Mars* objects

- Furnace
- Car
- Tools
- Machines
- Driest part of the house
- Firearms

Jupiter objects: Adverse influence: *Saturn* line through *Jupiter* objects

- Valuables
- Porch, patio, balcony
- T.V.
- Master bedroom
- Men's clothes
- Upper levels, e.g. attic

Saturn objects: Adverse influence: n/a

- Little-used or unsued areas
- All stairs, beams and doors
- Large wood or concrete structures including large trees
- Lower levels, e.g. basement
- Coldest part of the house

Uranus objects: Adverse influence: *Pluto, Mars or Saturn* line through *Uranus* objects

- Fuse box
- Antiques
- Electronic/electrical equipment, e.g. computer, ham radio, etc.
- Wind damage
- Ventilation

Neptune objects: Adverse influence: *Mars or Saturn* line through *Neptune* objects

- Drugs and/or poisonous substances
- Major windows
- Where you reflect or meditate
- Horses, cows, and other large animals
- Water damage
- Bacterial and infectious substances
- Large boats

Pluto objects: Adverse influence: *Moon or Venus* line through *Pluto* objects

- Main sewer outlet
- Main bathroom
- Hidden things
- Septic tank
- Hot tub
- Garbage cans
- Bedroom

Dividing your living area into astrological houses can also be used to better understand your living conditions; however, they comprise a larger area and therefore are not as definitive as the planetary lines. These houses can be used with greater reliability if they lack planets. This is more common nearer the equator, where only the First, Seventh, Twelfth and Sixth Houses contain planets in the Local Space horizon charts.

One important factor about the planetary lines in the home relates to their altitude. When the altitude is above or below 60 degrees it may point to an influence above or below ground. Planets below the horizon may point to events in the basement or under the house. Those above 60 degrees of altitude relate to occurrences in the upper rooms, attic or on the roof.

Take your time walking the chart, and when you are finished, go back to the center of the house where you started and think about what you've learned.

When you encounter an inharmonious situation the simplest remedy is to move the object to a better location. But what if it is a permanent fixture which cannot be removed? In these cases, you can use some methods suggested by Feng-Shui.

Planetary Lines in the Community

The planetary lines that radiate out in all directions in your home keep on going outside the house in their respective directions. You have a center in your home, and in turn your home acts as a center for the whole community.

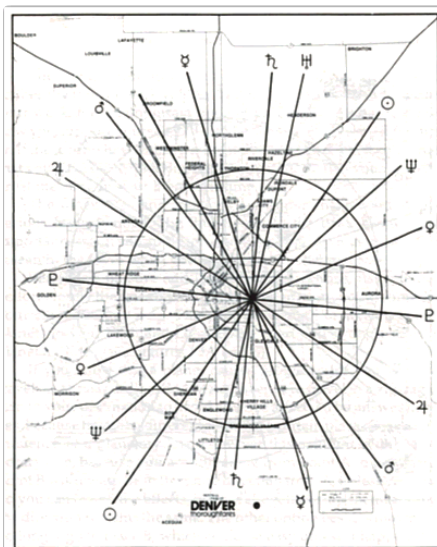


Fig. 13A
Planetary lines radiate throughout a metropolitan area.

Obtain a large and detailed city or county map and pinpoint where you live. Then place the center of the Local Space chart transparency ([here](#)) over that point on the map. You can also draw in the planetary lines by using a sextant. Once this is done, it will not take long to discover why certain areas evoke certain emotions and trigger different experiences (FIG. 13A and 13B).

Here is a list that can help you locate important areas throughout your community:

1. Direction of work is ...
2. The most frequent direction other than work is ...
3. Direction of educational and/or learning is ...
4. Library ...
5. Exercise ...
6. Supermarket ...
7. Restaurants ...

8. Relaxation, meditation ...
9. Family members ...
10. Bank ...
11. Lover ...
12. Gas station ...
13. Injuries ...
14. ...

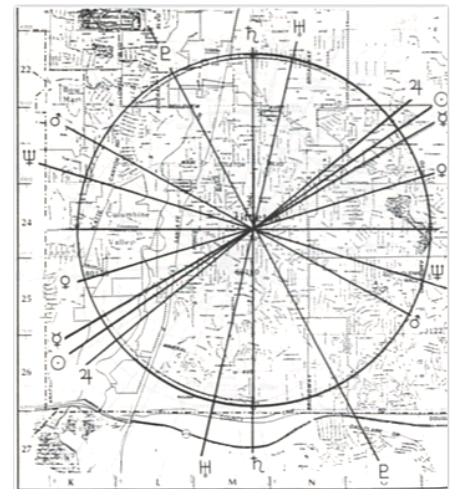
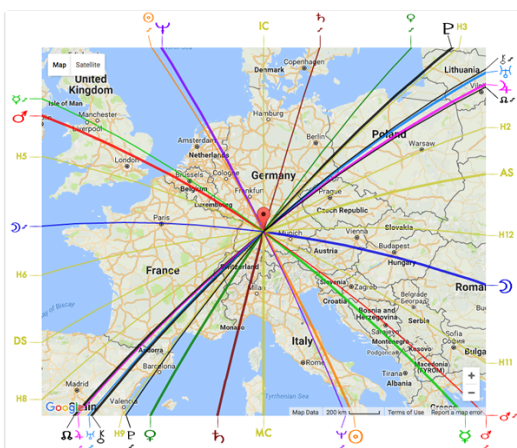


Fig. 13B
Planetary lines on a city map.

The line that you travel most frequently is important because you are continuously under its influence. If this line happens to be that of a planet that is strong for you, then you will benefit, because its energies will be drawn into your life. If a musician practices at a place where his or her Venus line runs, s/he will tend to be more productive. However if a construction foreman has his Venus line running through the job site, he may find that his workers tend to procrastinate, which causes delays.

Relocation and Long-Distance Travel along Planetary Lines

When people travel across the planet or settle down in a new locality, they immediately begin to take notice of different physical and psychological changes. For some individuals, definite unconscious and spiritual changes occur as well.



It is true that no matter how far you travel from the birthplace you still carry an original imprint of that location (with the aspects between planets remaining the same). The important point is that you can modify your birth chart to some extent by changing where you live! Therefore, the actual planetary influences at work, when properly understood, can give you a unique opportunity to develop plans and maximize your potential more directly, often in a short period of time.

When you change where you live, the physical surroundings will change. More importantly, however, your subjective interpretations also change. You begin to perceive the new place in accordance with the new planetary emphasis for that location. The longer you stay in a particular location, the more

dominant this planetary influence will become.

In the final analysis, any location is what you make of it. By overcoming difficult problems and drawing out the potential around you, it is possible to maximize your growth and happiness. Each individual's Local Space lines start at the center of the home, then pass through the home and radiate out into the community. They don't stop there, but keep right on going across the surface of the Earth. (see [Local Space Astromap](#))

If you can isolate your true life needs before relocating, then by comparing them with the appropriate planetary lines, it may be possible to know in advance in what direction you are going! On the other hand, if you are already in a new location, the knowledge of what planetary line you traveled on can prove very helpful in clarifying what situations caused the move, along with added objectivity in assessing present goals.

Planets on the Local Space Angles

The Local Space chart for your personal locality or any locality you may visit is liable to have one or more planets close to the major directions (i.e., north/Imum Coeli, south/Medium Coeli, west/Vertex or east/Anti-Vertex). Any planet within three degrees of a cardinal direction will have the predominating influence in that particular locality.

Two of these cardinal directions are the equivalent of the standard birth/natal angles. In the Northern Hemisphere, due south is the same as the Medium Coeli/Tenth House cusp, and due north is the same as the Imum Coeli/Fourth House cusp. The Ascendant is in an easterly direction but not usually due east, as is the Anti-Vertex. Likewise, the Descendant is usually in a westerly direction, but rarely due west as is the Vertex.



AC/DC and Anti-Vx/Vx

Even though it is rare that the Ascendant and Anti-Vertex are in the same place, a planet can set off both. Any planetary body when conjunct or opposite the Ascendant also triggers and/or includes the Vertex, and vice versa. The horizon and the ecliptic are intimately related to each other, so they always work inclusively rather than exclusively.

When the Ascendant/Descendant is receiving the aspect, the effects are likely to be more subjective and psychological; dealing with your *attitude, outlook and personality inclinations*. When the Vertex/Anti-Vertex is aspected, the influence may be more objective and *event-oriented*. The Vertex is a highly localized point; in a sense it is right in front of you, ripe and ready to manifest. Both angles *must* be used to get a complete picture.

Some technical information on the first/seventh house cusps, Anti-Vertex/Vertex and Ascendant/Descendant:

The first/seventh house cusp in the Local Space system is the east/west point on the horizon. In literature it is also identified with the Anti-Vertex/Vertex. The Anti-Vertex/Vertex is the point on the zodiac which is in an exact easterly/westerly direction, but usually not exactly on the horizon.

The first/seventh house cusp in the Local Space system is different from the ascendant/descendant. The ascendant/descendant is the point of the zodiac which is rising/setting on the horizon. This point is not identical to the east/west point.

Reverse Angles

While the houses in the Local Space chart still appear in an anti-clockwise order, like in the standard horoscope, the four angles are reversed, i.e. they are true to compass directions: the first house is due East, the fourth due North, the seventh due West, and the tenth due South. The houses will have various meanings similar to the standard interpretations of planets in Houses - similar because at this point there just isn't enough information on how the planets in Local Space Houses may differ from the standard.

Orbs

The accepted practice of "the closer the orb, the stronger the influence" applies. If you have Jupiter 1 degree from the north and Saturn 4 degrees from the east, then Jupiter would be the predominating influence. You would still feel the influence of Saturn, but it would not be as significant as that of Jupiter.

Equator

The closer your present location is to the equator, the more the planets will tend to cluster either east or west. Two and even three and four planets can be very close together, producing some complex effects. Therefore it is suggested that the Prime Vertical/Campanus chart should be used for equatorial latitudes. Aspects and interpretations are the same, but keep in mind that you are dealing with a circle that goes east to west, above and below you, connecting the zenith and nadir. The Fourth/zenith, First/west, Tenth/nadir and Seventh/east are the positions of the angles.

Houses in the Local Space Chart

In the Local Space chart the controversy of Houses systems is avoided because the horizon is always measured equally. The 360 degrees of azimuth on the horizon around you can be used all throughout the middle and upper latitudes. It is most effective at the polar regions and least effective at the equator.

N
W + E
S

The 360-degree constant allows for each sector or House to be exactly 30 degrees in length. Take a look at Figure 2 (above) and it will be apparent that the Local Space houses are in reverse of the standard horoscope. The Seventh House is to your left (west), and the First to your right (east); also, the Third and Fourth Houses are at the top (north) and the Ninth and Tenth are at the bottom, which is south. On all maps and compasses, this common figure is displayed (see left).

The Local Space Houses have no rotation; they remain fixed in their directions. However, the transiting planet positions do change continuously throughout the day, placing them in any one of the 12 Houses, 16 directions, and in different degrees of azimuth. Remember that they are also at different degrees of altitude (0 to 90) above and below the horizon.

Traveling within the community or for longer distances does not mean that a planetary line will be followed. Sometimes you may travel into a sphere of life's activity, i.e. into one of the Local Space sectors (Houses). Keeping within the standard meaning of the Houses, let's say you wanted to meet other people while traveling to the west-southwest, the Local Space Seventh House. Moving in a northwesterly direction would put you in the Local Space Fifth House, a place where you could meet a lover or take your current lover to the movies. What if you just wanted to be by yourself? You could travel into your Local Space Eighth or Twelfth Houses. As long as you are not within 7 degrees of a planet, the Local Space Houses will generally describe the activities. When you get closer to a planet, its particular energy will override the general meaning of the House.

Besides the personal uses of the Local Space Houses, there are some apparent historical implications. The westward movement of civilization along with the destructive concept of "manifest destiny" seems to fit in with Sixth and Seventh House matters. The Seventh House is "others" and it can be viewed as the greener grass on the other side of the hill. The migration of people westward caused wars, intermarriage between various groups, new legal problems, temporary alliances, etc. These all fit very clearly with the standard meanings of the Seventh House: open enemies, marriage, litigations, partnerships. The westward movement also caused the spread of diseases, the interbreeding and domestication of many animals, the development of new skills to meet the challenge of the frontier, the necessity for large armies, etc. These happenings correspond to the Sixth House: health matters, small animals, job skills, hard work, military service.



The great civilizations of the past and present predominantly conquered to the south; this is the Tenth House, where power, leadership, authority, position, fame are manifested. Is this not what war and conquest is all about? The Ninth House is also to the south; after the conquest, the new rulers introduce their philosophy, which caused the educational system and laws of the land to change. Throughout history the northernmost culture and/or the one with a higher elevation has conquered and easily maintained the land and peoples to their south.

The previous examples dealt with past historical migrations of many people; however the personal applications are many. You can travel into friendships by going southwest, or into money through the northeast. So Houses definitely work in Local Space astrology, but in a more general sense than planetary lines.